



COOLEEDGE LUMINOUS CEILINGS FABRILUM INDIRECT LIGHTING: SPECIFICATIONS

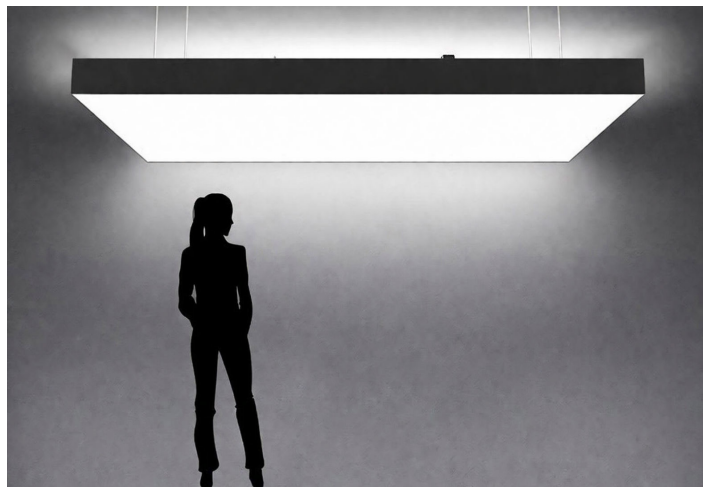
PROJECT		REFERENCE TYPE	
SPECIFIED BY		QUANTITY	
DATE		NOTE	Luminous Ceilings

DESCRIPTION

FABRILum luminaires deliver best-in-class immersive illumination with unparalleled acoustic performance. Additional Indirect Lighting Kits sold as factory installed add-ons to FABRILum luminaires can help bring Cooledge's low-glare performance to a typically underserved part of any visual space - the ceiling.

Features include:

- An aluminum extrusion for ease of mounting and improved durability.
- A clear plastic lens which can be wiped clean of dust - important for exposed, upward facing light sources.



TECHNICAL SPECIFICATIONS

CRI	90
CCT Options	2700K,3000K,3500K,4000K,5700K
Control	0 – 10V
Input Voltage	Nom. 100-277VAC
Location	Indoor, dry location only
Operating Temperature	0 – 40°C (32 - 104°F)
Storage Temperature	-40 – +85°C (-40 - +185°F)
Relative Humidity	90% max (non-condensing)

SIZES

Shape	FABRILum size	Total INDR Kit light output (lm)	Total INDR Kit power consumption (W)
Rectangle	RS (4'X4')	2800	24
	RM (4'X6')	4200	36
	RL (4'X8')	5600	48
	RXL (6'X6')	5600	48
	RXXL (6'X8')	7000	60
Circle	CS (4')	1400	12
Bullnose	BNM (4'X8')	4200	36
	BNL (4'X10')	5600	48

HOW TO ORDER

FBS – INDR – – – UL				
1	2	3	4	5
1 MOUNTING FBS = Suspended	2 KIT INDR = Indirect	3 NOM.SIZE RS CS RM BNM RL BNL RXL RXXL	4 CCT 27 = 2700K 30 = 3000K 35 = 3500K 40 = 4000K 57 = 5700K	5 CERTIFICATION UL = UL Listed



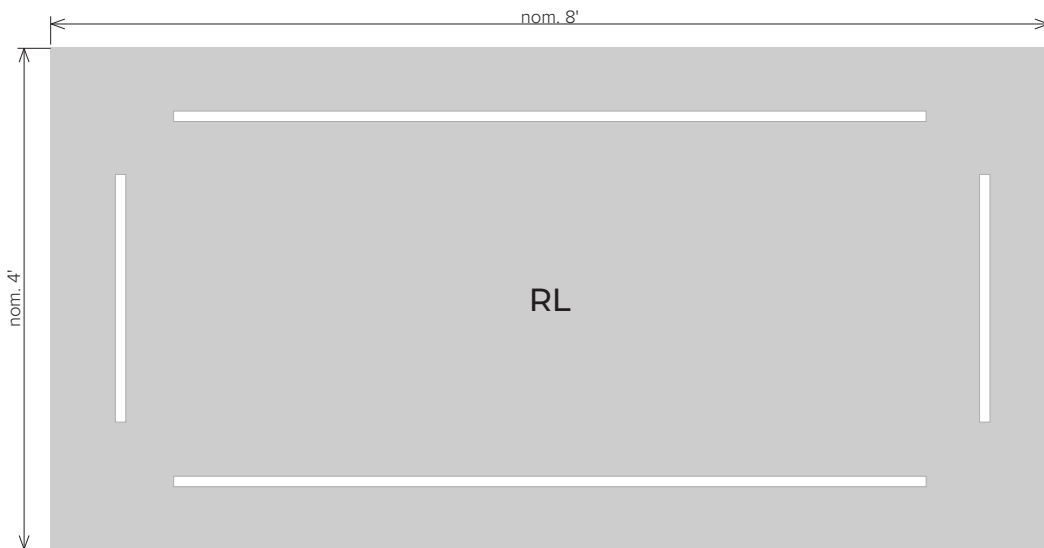
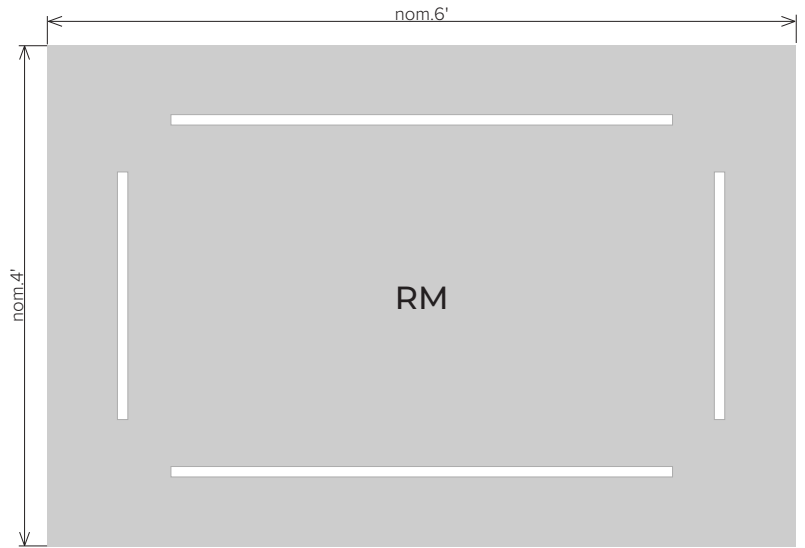
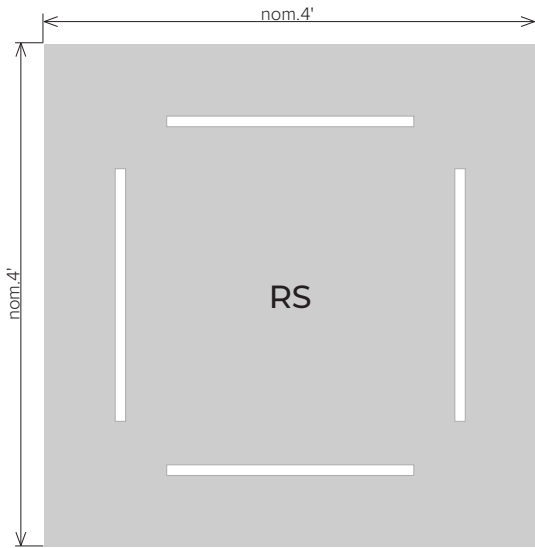
Cooledge Lighting Inc.
110-13551 Commerce Parkway
Richmond, BC V6V 2L1 Canada

O +1 604 273 2665
F +1 604 273 2660
T +1 844 455 4448
W cooledgelighting.com

Cooledge Lighting reserves the right to change materials or modify the design of its product without notification as part of the company's continuing product improvement program.

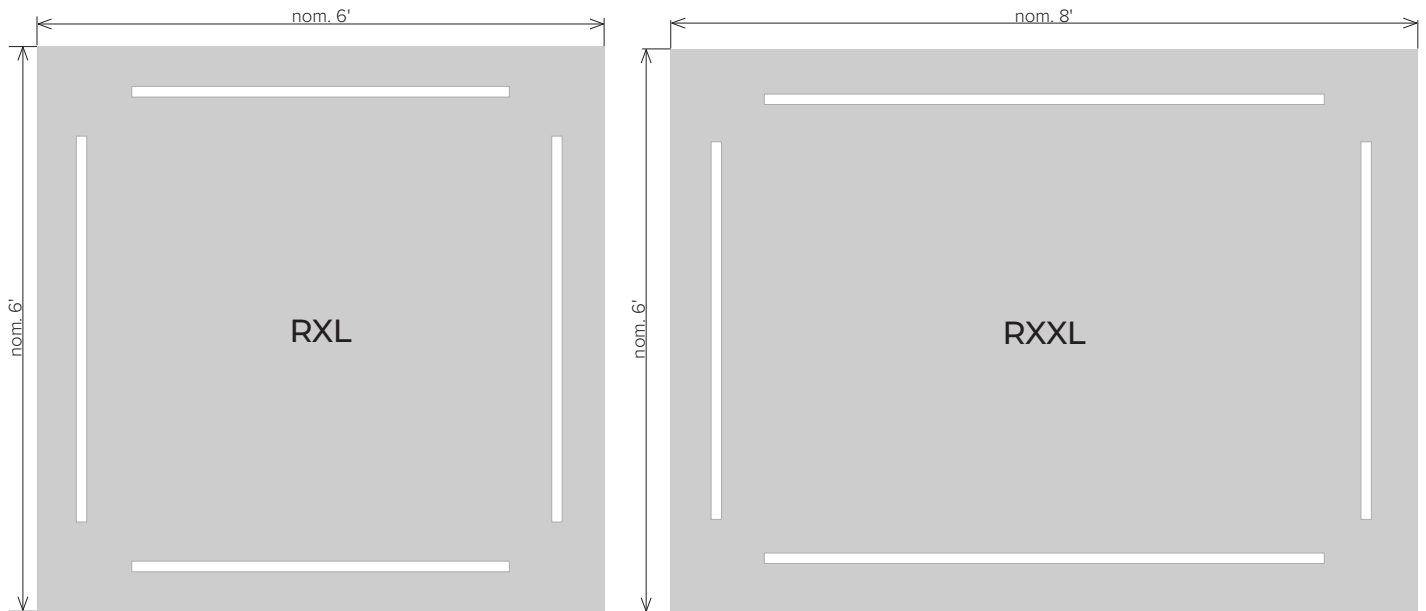
LAYOUTS

RECTANGLES

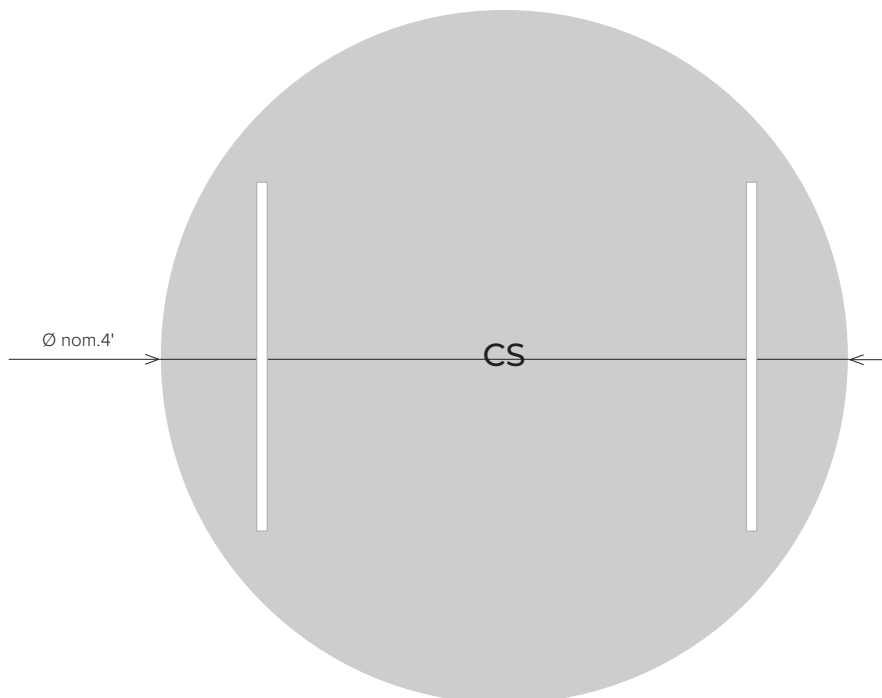


LAYOUTS

RECTANGLES



CIRCLE



LAYOUTS

BULLNOSE

